

	Equally Weighted	Asset Weighted
February 2019 Performance	-0.32%	0.66%
2019 Year to Date	-0.98%	0.02%

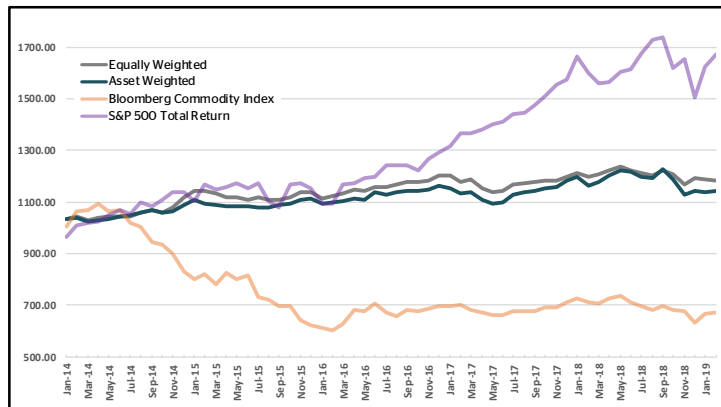
The Bridge Alternatives Commodity Hedge Fund Index was designed as a benchmark to track the performance of the largest commodity focused hedge funds. It is the first commodity hedge fund index to be transparent and representative of where assets are within the commodity hedge fund space. Index performance is reported on a monthly basis and includes the largest 15 hedge fund managers by strategy assets under management. The index will be rebalanced and reconstituted on an annual basis.

EQUALLY WEIGHTED													
Year	Jan	Feb	Mar	Apr	May	Jun	Jul	Aug	Sep	Oct	Nov	Dec	YTD
2019	-0.67%	-0.32%											-0.98%
2018	1.48%	-1.24%	0.70%	1.32%	1.25%	-1.18%	-0.90%	-0.65%	1.39%	-1.08%	-3.36%	2.25%	-0.16%
2017	0.02%	-1.76%	0.61%	-2.67%	-1.33%	0.31%	2.02%	0.65%	0.20%	0.36%	0.04%	1.23%	-0.41%
2016	-2.02%	0.62%	0.92%	1.36%	-0.40%	1.39%	-0.20%	1.03%	0.73%	0.21%	0.47%	1.36%	5.56%
2015	2.23%	-0.02%	-0.76%	-1.30%	0.25%	-0.97%	0.98%	-1.03%	-0.13%	0.95%	1.80%	-0.07%	1.90%
2014	3.31%	1.01%	-1.23%	1.05%	0.09%	0.09%	0.06%	1.50%	0.73%	-0.62%	1.57%	3.62%	11.67%

Bloomberg: BAIXCMEW Index

ASSET WEIGHTED													
Year	Jan	Feb	Mar	Apr	May	Jun	Jul	Aug	Sep	Oct	Nov	Dec	YTD
2019	-0.63%	0.66%											0.02%
2018	1.26%	-3.08%	1.46%	1.96%	1.78%	-0.27%	-1.79%	-0.24%	3.00%	-3.27%	-5.07%	1.27%	-3.30%
2017	-0.72%	-1.89%	0.55%	-2.70%	-1.44%	0.70%	0.89%	0.26%	0.59%	1.01%	0.26%	2.15%	1.67%
2016	-1.68%	0.60%	0.30%	1.02%	-0.35%	2.49%	-1.05%	0.95%	0.37%	0.06%	0.77%	1.11%	4.64%
2015	1.54%	-1.10%	-0.45%	-0.47%	0.15%	-0.41%	-0.15%	-0.14%	0.76%	0.77%	1.43%	0.11%	2.02%
2014	3.55%	0.57%	-1.57%	0.55%	0.19%	0.94%	0.52%	1.07%	0.76%	-0.88%	0.81%	2.22%	8.99%

Bloomberg: BAIXCMAW Index



SUMMARY STATISTICS	Equally Weighted	Asset Weighted
Annualized Return	3.40%	2.78%
Annualized Volatility	4.54%	5.28%
Information Ratio	0.75	0.53
Maximum Drawdown	-5.68%	-8.18%
Correlation to BCOM	-0.04	0.11
Correlation to S&P 500	-0.02	0.00

INDEX DETAILS	
CURRENT CONSTITUENTS	
<ul style="list-style-type: none"> PIMCO Commodity Alpha Master Fund Andurand Capital Frere Hall Capital Management (Master Fund) Northlander Commodity Advisors * Orion Commodities Fund LP JEM Commodity Relative Value Program Lubben Capital Management CoreCommodity Management (Absolute Return) 	<ul style="list-style-type: none"> Massar Macro Commodity Fund, LP Millburn Commodity Program Ospraie Commodity Fund LP Northern Trace Capital Yannix Capital Management Arctic Blue Capital Polar Star Fund Limited
METHODOLOGY	
Style Definition: Hedge funds that chiefly employ a commodity focused, long / short trading approach using commodity derivative instruments and / or physical products.	
Largest fifteen (15) managers by strategy assets under management (USD) who meet the style definition	
Reconstituted and rebalanced on an annual basis.	
FOR MORE INFORMATION	
Bridge Alternatives / 773.446.5676 / indices@bridgealternatives.com	
* Has yet to report February 2019 performance	

The information in this transmittal is confidential and is intended only for the recipient(s) listed above. If you are neither the intended recipient(s) nor a person responsible for the delivery of this transmittal to the intended recipient(s), you are hereby notified that any unauthorized distribution or copying of this transmittal is prohibited. This is not an offer to sell or seek offers to buy any product or enter into any transaction. The index performance is produced on a best efforts basis.